



Children and Young People's Service

Agenda

Notice of a public meeting of **North Yorkshire Standing Advisory Council on Religious Education (SACRE)**

Date: Wednesday, 20th October, 2021

Time: 4.00 pm

Venue: Remote Meeting held via Microsoft Teams

This meeting will be held using video conferencing with a live broadcast to the Council's YouTube site.

The meeting will be available to view once the meeting commences, via the following link - www.northyorks.gov.uk/livemeetings. Recording of previous live broadcast meetings are also available there.

Business

1. **Election of Chair**
To elect a Chair for the next twelve months.
2. **Election of Vice-Chair**
To elect a Vice-Chair for the next twelve months.
3. **Chair's Announcements**
4. **Apologies for Absence**
5. **Declarations of Interest**
6. **Minutes of the Meeting held on 22nd June 2021 and any matters arising** (Pages 5 - 12)
7. **Report of the Professional Religious Education Adviser, Olivia Seymour - General Update** (Pages 13 - 16)
8. **Update by the Local Authority - Adrian Clarke, Principal Education Adviser (Support)** (Pages 17 - 20)
9. **Work Programme - Patrick Duffy, Clerk** (Pages 21 - 26)

10. Chair's Report - including correspondence (Verbal Report)

11. Date of Next Meeting

This will be on Tuesday 7th December 2021 at 4.00 p.m. The Committee is asked to decide whether it wishes to hold the meeting remotely or in person and, if the latter, to indicate any preference as to a location.

12. Any other business which the Chair considers to be urgent

Contact Details:

For enquiries relating to this agenda please contact Patrick Duffy, Senior Democratic Services Officer. Tel: 01609 534546 Or email Patrick.Duffy@northyorks.gov.uk
Website: www.northyorks.gov.uk

Barry Khan
Assistant Chief Executive
(Legal and Democratic Services)

County Hall
Northallerton

Tuesday, 12 October 2021

**MEMBERSHIP OF THE STANDING ADVISORY COUNCIL ON
RELIGIOUS EDUCATION**

Group A: Faith Groups	
Professor J Adams	Humanist
Sarah Leach	Buddhism
Chris Devanny	Catholic
Sian Henderson	Methodist
Bill Kimberling	The Church of Jesus Christ of Latter-Day Saints
Nasr Moussa Emam	Muslim
Helen Sellers (Chair)	Baptist
Mohinder Singh Chana	Sikhism
Vacancy	Hindu
Vacancy	Jewish
Vacancy	Salvationists
Vacancy	Society of Friends
Group B: Church of England	
Reverend Simone Bennett	
Philippa Boulding	
Gill Simpson	
Vacancy	
Group C: Teaching Associations	
Stuart Anslow	
Tara Askew	
Vacancy	
Vacancy	
Vacancy	
Group D: Local Authority:	
County Councillor Robert Heseltine	
Councillor Janel Jefferson	
County Councillor Andrew Lee	
County Councillor Patrick Mulligan	
County Councillor Annabel Wilkinson	
Co-opted Member: Academic Expertise in Religious Education	
Vacancy	

This page is intentionally left blank

North Yorkshire County Council

North Yorkshire Standing Advisory Council on Religious Education (SACRE)

Minutes of the remote meeting held on Tuesday, 22nd June, 2021 commencing at 4.00 pm.

Group A: Christian Denominations and such other religious denominations as, in the Authority's opinion, will appropriately reflect the principal religious traditions in the area:

Helen Sellers (Baptist) – Chair

Professor John Adams (Humanist), Chris Devanny (Catholic), Sian Henderson (Methodist) Bill Kimberling (The Church of Jesus Christ of Latter-Day Saints), Sarah Leach (Buddhist), Nasr Moussa Emam (Muslim), Mohinder Singh Chana (Sikh)

Group B: Church of England: Reverend Simone Bennett and Gill Simpson (Diocese of Leeds), Philippa Boulding (Diocese of York)

Group C: Teachers Associations: Tara Askew, Judy Clarke, Rosemary Laverack and Douglas Rice-Bowen (Vice-Chair)

Group D: Local Authority: County Councillors Robert Heseltine, Janet Jefferson and Patrick Mulligan

Officers present: Adrian Clarke (Principal Education Advisor - Support), Daniel Harry (Democratic Services and Scrutiny Manager), Patrick Duffy (Senior Democratic Services Officer – Clerk to SACRE) and Olivia Seymour (Professional Religious Education Adviser)

Copies of all documents considered are in the Minute Book

244 Welcome and Announcements

For the benefit of any members of the public or the media viewing this broadcast, the Chair advised that the Standing Advisory Council for Religious Education is a Statutory Committee established by the Local Authority.

She added that its main function is to advise and support the Local Authority on matters related to religious education for schools that follow the locally Agreed Syllabus and on Collective Worship.

Four groups are represented on SACRE:-

- Group A – Christian Denominations and such other religious denominations that reflect the principal religious traditions in the area
- Group B – The Church of England
- Group C – Teacher and Head Teacher Associations
- Group D – The Local Authority

The Membership of SACRE is on the back of the Agenda for today's meeting and the papers for this meeting had been published in advance on the County Council's website.

The Chair also welcomed three new Committee Members – Sarah Leach (Buddhist) and Sian Henderson (Methodist) had joined Group A and Gill Simpson had joined Group B, as a representative of the Church of England, Leeds Diocese.

245 Apologies for Absence

Apologies were received from County Councillor Annabel Wilkinson and Heather Russell (Senior Educational Advisor).

246 Declarations of Interest

There were no declarations of interest.

247 Minutes of the Meeting held on 20th April 2021 and any matters arising

RESOLVED –

That the Minutes of the meeting held on 20th April 2021 be agreed and signed by the Chair as a correct record.

Matter arising – Min. No. 239: National updates: Collective Worship

Professor Adams said that he was concerned that what he had said was described as offensive. He did not feel that this was respectful of his view. He had hoped to give the Member concerned the opportunity to withdraw the remark, but he was not at today's meeting. Nothing he said was offensive. He was describing SACRE's legal responsibilities relating to education and worship. Worship is not an educative activity.

Professor Adams also disagreed with the view that his use of the term "indoctrination" was improper or incorrect. He wished to place on record his objection to both interjections.

The Chair stated that there was clearly a difference of opinion on this and she would prefer not to have further discussion on it now. SACRE will need to consider this again as it is under review nationally. She asked Members to pause discussion for now.

Reverend Simone Bennett commented that, whilst she understood there are differences of opinion, SACRE has a role to fulfil. She accepts that some Members feel there should not be collective worship in schools but that does not change what our statutory function is.

Nasr Moussa Emam commented that, although he had not been present and was not aware what had been said, his knowledge of Professor Adams meant that he considered his comments were always in the best interests of SACRE and were not offensive.

The Chair noted the comments made and encouraged Members to work together on this when it is next considered.

248 Review of the Constitution - Patrick Duffy, Clerk

Considered –

A report by the Clerk, Patrick Duffy, which asked Members to consider approving a revised Constitution.

He advised that the Constitution was last reviewed in 2019. It felt appropriate to have a fresh look at it after two years.

In liaison with Olivia Seymour - the Professional Religious Education Adviser - and colleagues from Children and Young People's Services, he had compared the

Constitution to those of some other Authorities and, in particular, to the Guidance by the National Association of SACREs – NASACRE.

There are a number of areas where changes are suggested, to align North Yorkshire SACRE more fully with the national guidance. These were included in the report and he highlighted some of them.

The changes primarily provide clarification, rather than fundamentally altering the Constitution.

Councillor Robert Heseltine referred to the suggestion that in the event of a vote ending in a tie the Chair should not have a casting vote and the matter be declared a non-decision vote. What was the thinking here? Patrick Duffy advised that SACRE operates on a basis of consensus and the Chair is a Member of a particular Group. Therefore, it was felt to have a casting vote could put the Chair in a difficult position. Councillor Heseltine said he would prefer the Chair to have a casting vote.

Douglas Rice-Bowen queried whether it is necessary to say, for Group C, “representing Teaching Associations”? Olivia Seymour responded that this is written into the NASACRE Guidance. Often, however, there is a pragmatic response, in terms of recruitment for the Teacher Group and it is noted to which organisations they belong.

At this stage, the live broadcast of the meeting was suspended to enable each of the four Groups that comprise SACRE to consider how they wished to vote. The breakout rooms facility on Microsoft Teams was used for this purpose.

On being reconvened, the live broadcast recommenced and, in accordance with the Committee’s Constitution, each of the four Groups that comprises SACRE exercised a vote on this matter.

At the Chair’s request, the spokesperson for each Group related their decision:-

Group A (Christian Denominations and such other religious denominations as, in the Authority’s opinion, will appropriately reflect the principal religious traditions in the area) – Approve the revised Constitution.

Group B (Church of England Representatives) – Approve the revised Constitution.

Group C (Teacher Representatives) – Approve the revised Constitution.

Group D (Local Authority Representatives) - Approve the revised Constitution.

Accordingly, it was

RESOLVED –

That SACRE approve the proposed changes to its Constitution and thereby ratify the revised Constitution, incorporating the changes, at Appendix B to the Report.

The Chair decided to vary the order of the business on the Agenda by taking the Local Authority Update as the next Item.

249 Update by the Local Authority - Adrian Clarke, Principal Education Adviser (Support)

Considered –

A report by Adrian Clarke, which updated Members on developments from the Local Authority's perspective.

He highlighted the following aspects:-

- He and Heather Russell had worked with Olivia Seymour on a range of issues to support SACRE
- Training for Professional Practice Groups had been co-ordinated and websites had been audited and updated to ensure information was germane
- Work is being undertaken with NES – the trading arm of the County Council that works with schools – to update services. He will ensure that SACRE are included in this
- The Termly Newsletter had been emailed to all schools via the “Red Bag”
- A generic training feedback form will be available from September 2021 to enable more nuanced responses than is possible with the current generic version
- All training will be included in a wider training brochure and a briefing is to be provided to School Advisers on the work of SACRE
- The electronic questionnaire to be sent to schools about the work of SACRE is almost complete

The Chair remarked that there are positive developments which will raise the profile of SACRE.

In response to a comment from Nasr Moussa Emam about the questionnaires being sent to schools, the Chair advised that SACRE had considered a draft of these and they had been further refined by the Professional RE Adviser, in discussion with Teacher Representatives on SACRE.

Nasr added that he had not received Newsletters. Patrick Duffy was asked to re-circulate recent Newsletters to Members.

NOTED.

250 Report of the Professional Religious Education Adviser, Olivia Seymour - General Update

Considered –

A report by Olivia Seymour, which informed Members of training and support given to schools since the last SACRE meeting and which informed them of national updates in RE.

She made the following points, in particular:-

- Training has continued online. This has been a challenging year for teachers, who are exhausted, and this was reflected in attendance at training during the summer term
- The Secondary Schools Network has been difficult to get going. She has discussed with officers in the Local Authority ways of addressing the needs of secondary schools
- The questionnaires on monitoring of RE will be sent out electronically. It will be important to analyse the returns – not least because of the new template for Annual Reports, which refers to the monitoring role. It is hoped that the questionnaire, along with plans to engage with secondary schools, will enable us to write a meaningful and accurate report on RE and Collective Worship in our schools

NOTED.

251 Report of the Professional Religious Education Adviser, Olivia Seymour - Ofsted Research Review

Considered –

A report by Olivia Seymour, which provided a summary of the recent Research Review conducted by Ofsted. A link to the full report was included and is also set out [Here](#) for ease of reference.

The Review sets out Ofsted's view as to what makes for effective RE. It is the start of a national conversation about standards in RE. A second report will follow in 18 months, which will include results of inspections in schools where deep dives have been completed. This should inform discussions for curriculum development of RE Leaders and the themes will from part of planned training.

Olivia added that she will bring further information on different aspects of the research to SACRE in due course.

The Chair encouraged Members to look at the terminology Ofsted are using, as it is important that we are familiar with this.

Professor Adams mentioned that SACRE has a locally agreed syllabus to reflect different circumstances in different parts of the country. Does Ofsted say anything about this? Olivia Seymour advised that the report makes it clear they are looking at contextualised curriculum and how Authorities have taken what they are required to do legally and adapted this to their school framework.

Professor Adams followed up by saying if an agreed syllabus has a good deal of local contextualising, then Ofsted may comment on how well that is delivered - as compared to ours, which has none. Olivia advised that our syllabus, like many, provides a minimum content and schools can go beyond that. They are focusing on the quality of what people experience in the classroom and whether there is curriculum progression and people's understanding of RE is improving over time.

NOTED.

252 Chair's Report (Verbal Report)

Considered –

A verbal update from the Chair.

NASACRE AGM on 24th May

This was held remotely, via Zoom. It has been an inspiring day. One of the Executive Members, Sukaina Manji, had produced a summary of the day, which will be circulated with the Minutes. The papers are available on the NASACRE website.

The theme of the day has been Authority in RE. She had been particularly struck by the keynote presentation from Denise Cush, who concluded that authority should be seen as an opportunity for service, rather than an exercise of power.

The Chair also referred to the fact that she and officers from the Local Authority had attended the mid cycle briefing of the Young People Overview and Scrutiny Committee on 28th May 2021. This had been a useful discussion, outlining the work of SACRE. It is hoped that next year it will be possible to attend the full Committee to help raise the profile of SACRE leading to an increased understanding of its work and purpose.

NOTED.

253 Development Plan - update by the Chair

Considered:-

An update, prepared by the Chair, which set out progress against the Development Plan.

With regard to feedback from teachers and pupils, the Chair stressed that SACRE needs to continue to increase steps being taken and to think about how we can creatively elicit opinions from pupils.

She added that Adrian Clarke will be presenting a report on funding to the September meeting, following on from the recent NASACRE Report.

NOTED.

254 Correspondence - Chair (Verbal Report)

The Chair reported as follows:-

Blog on RE

She had written, via the Head Teacher, to the winner of a competition on blogs for RE, which had been advertised in the Newsletter. The winning pupil is a Key Stage 2 pupil who attended Lythe Church of England, Voluntary Controlled School, near Whitby. She had demonstrated a clear sense of the value of her RE lessons in helping her to understand her own beliefs and those of her classmates.

Douglas Rice-Bowen

She was sorry to report that Douglas, an enthusiastic Member of SACRE and Vice-Chair during the last year, was leaving. She wished him all the best.

Douglas informed Members that he is leaving to train for the Priesthood. He thanked SACRE and urged them to keep up the good work.

255 Date of Next Meeting - Tuesday 21st September 2021 at 2.00 p.m.

This will be on Tuesday 21st September 2021 at 2.00 p.m. to be held remotely, via Microsoft Teams – or at a venue to be confirmed.

256 Dates of meetings for the School Year, 2021/2022

The following dates were proposed:-

(Tuesday 21st September 2021 at 2.00 p.m. – had already been confirmed)

Tuesday 7th December 2021 at 4.00 p.m.

Monday 14th February 2022 at 2.00 p.m.

Tuesday 21st June 2022 at 4.00 p.m.

Having regard to comments from Members, it was

RESOLVED

- a) That the December 2021 and June 2022 meetings be held on the dates indicated.
- b) That officers consider if it would be possible to change the date for the February 2022 meeting.
- c) That a decision as to whether meetings be held remotely or face to face be made when the situation with the Pandemic is clearer and having regard to any requirement there may be for SACRE to meet face to face to approve certain matters and the fact that some Members may struggle to attend face to face meetings.

257 Any other business which the Chair considers to be urgent

Whilst it was not urgent business, as such, Professor Adams mentioned that Baroness Burt had introduced a Bill in the House of Lords, with the objective of replacing compulsory worship in schools with inclusive assemblies. He thought Members might be interested to know this.

The meeting concluded at 5.35 pm.

This page is intentionally left blank

North Yorkshire County Council

North Yorkshire Standing Advisory Council on Religious Education (SACRE) –

20 October 2021

Update from Professional RE Adviser

1.0 Purpose of the Report

To inform Members on work undertaken by the Professional RE Adviser since the last SACRE meeting.

To inform Members of national updates in Religious Education.

2.0 Training

- 2.1 The training programme is still being finalised for the academic year 2021-2022 but will include two remote professional practice groups each term for primary RE leads, one remote professional practice group each term for secondary RE leads, a subject leadership day course and input for senior leaders and governors.

3.0 Monitoring of RE

- 3.1 As reported at our last meeting the Professional RE Adviser is working with the LA to send the questionnaires to schools and collate the information. It had been agreed that the questionnaires would go out at the end of June in an electronic format and school advisers would communicate this to their schools. However there was a delay and the LA sent out the questionnaires this term. This information will provide an important baseline for SACRE in considering its next steps in undertaking its responsibility for monitoring standards in RE. The information will also provide important information for the annual report and the new expectations from DFE within this report.

4.0 British public values an understanding of worldviews and role of RE

- 4.1 Earlier this summer, Culham St Gabriel's Trust conducted research among 2,000 UK adults, in partnership with Savanta, to find out to what extent the public values an understanding of religious and non-religious worldviews and people's views on the role of religious education. (see attachment)
- 4.2 The results were surprising and very encouraging, with key findings including:
On understanding religious and non-religious worldviews:
- Around two-thirds of UK adults say it's important to understand the beliefs of others in at least four contexts:
 - In everyday life (69%)
 - In relationships with friends and family (65%)
 - In school (65%)
 - In local communities (64%)
 - In the workplace (61%)
 - Two-thirds (64%) think that an understanding of their own beliefs is important to them, while over half (57%) agree that this understanding has a positive impact on their wellbeing

On the importance and role of Religious Education:

- Nearly two-thirds (64%) of UK adults think that it is important that RE is part of the school curriculum today
- Two-thirds (65%) of respondents agree that RE has an impact on people's ability to understand each other in wider society
- 71% stated that RE should reflect the diversity of backgrounds and beliefs in the UK today

4.3 Our main conclusion is that:

Most UK adults think that RE should be taught in schools, with the majority agreeing that it helps young people understand and respect others' beliefs, regarded by many as important in a variety of social and private contexts.

5.0 Regional training for Schools through LTLRE and NATRE Regional Ambassador role

5.1 As regional Ambassador for RE I am running the following training for teachers in the region this term (all online).

Primary	Secondary
Designing an Effective RE Curriculum - Gillian Georgiou	From conversation to implementation: constructing an RE curriculum Ben Wood
Engaging in research in the primary RE classroom – Dr Emma Salter	Engaging in research in the secondary RE classroom - Dr Kathryn Wright
EYFS and the RE curriculum – Catriona Card	Developing a coherent curriculum for A- Level – Dr Rachael Jackson-Royal
Anti-racist RE – Saima Saleh	Anti-racist RE – Ashish Kundi
Text and story – Fiona Moss	Diversity in Islam - Zameer Hussain
	Developing a coherent curriculum for GCSE – Dr Rachael Jackson-Royal

6.0 Inter Faith Week 2021

6.1 Inter Faith Week 2021 takes place from **14-21 November**. SACREs play an important role in making schools and local authorities aware of Inter Faith Week and its importance for promoting mutual understanding and respect between those of different faiths and beliefs. Of more than 600 events in 2020, one of the most challenging years in living memory, around a sixth were school-based.

6.2 This year Inter Faith Week starts on Remembrance Sunday and ends the following Sunday. For details about the week, the best place to look is the [Inter Faith Week website](#) which contains a rich bank of resources for those wishing to hold events.

A [new section](#) has been created for schools. It contains bespoke materials for both [Primary](#) and [Secondary](#) schools that are designed to support the delivery of a locally agreed syllabus. There is also a [Golden Rule](#) poster on eleven different faith traditions, to download for display in a classroom or meeting room.

6.3 We have an opportunity as a SACRE, working in partnership with The Craven Development Education Centre to develop some video resources to support schools for future Interfaith Weeks. The intention would be to produce a series of 1-2 minute videos from members of SACRE and people in North Yorkshire answering the question 'How do I live out my (Muslim/Sikh/Hindu/Humanist etc) beliefs in North Yorkshire today?' We would encourage those involved to talk about how their beliefs and values affect their daily lives making reference to sacred/important text/place of worship/ home life/working life etc The videos would be hosted on Vimeo and links shared with schools to use as part of interfaith week and ongoing

7.0 Holocaust Memorial Day

- 7.1 Holocaust Memorial Day is 27 January. SACREs, LAs and schools can find a wide variety of resources on the [Holocaust Memorial Day Trust \(HMDT\)](#) website.

Resources were launched at a **special online event on 9 September**. The event provided an opportunity for participants to learn about the past through an exploration of the new resources and hear from two guest speakers, Vera Schaufeld and Lord Alf Dubs, who both came on the Kindertransport.

- 7.2 The Trust is aware that some SACREs are heavily involved in themselves holding an event, or encouraging schools to mark HMD, but others may not have done this regularly, so please consider increasing your local involvement, especially at a time when hate crime, intolerant/extremist views, anti-Semitism and anti-Muslim hate is increasing.
- 7.3 The Trust also commends Generation to Generation (G2G), a charity that provides speakers to tell their family Holocaust stories online or face-to-face to a variety of audiences. Through these engaging and historically accurate presentations, integrating first-hand survivor testimony, G2G works to ensure the lessons of the Holocaust are learned, promoting tolerance of all groups in society.
- 7.4 To consider how G2G can support SACRE or your schools and to book a speaker, visit <https://www.generation2generation.org.uk> or book onto a free introductory event for educators: <https://www.generation2generation.org.uk/news/events/>

8.0 Muslim Council of Britain Visit My Mosque resource

- 8.1 A new “Visiting a Mosque: RE Teachers Resources” pack is intended to support and empower Religious Education (RE) Teachers in organising and delivering school visits to Places of Worship such as mosques.
- 8.2 Additionally, during the COVID-19 pandemic, “in-person” visits to Places of Worship such as mosques were paused. As a result, signposting to “virtual” mosque tours has been included in this pack as an additional resource and to increase familiarity and confidence when organising in-person visits.
- 8.3 To find out more and look at the resources visit <https://www.visitmymosque.org/for-re-teachers/>

Olivia Seymour
Professional Adviser to North Yorkshire SACRE
County Hall, Northallerton

6/10/2021

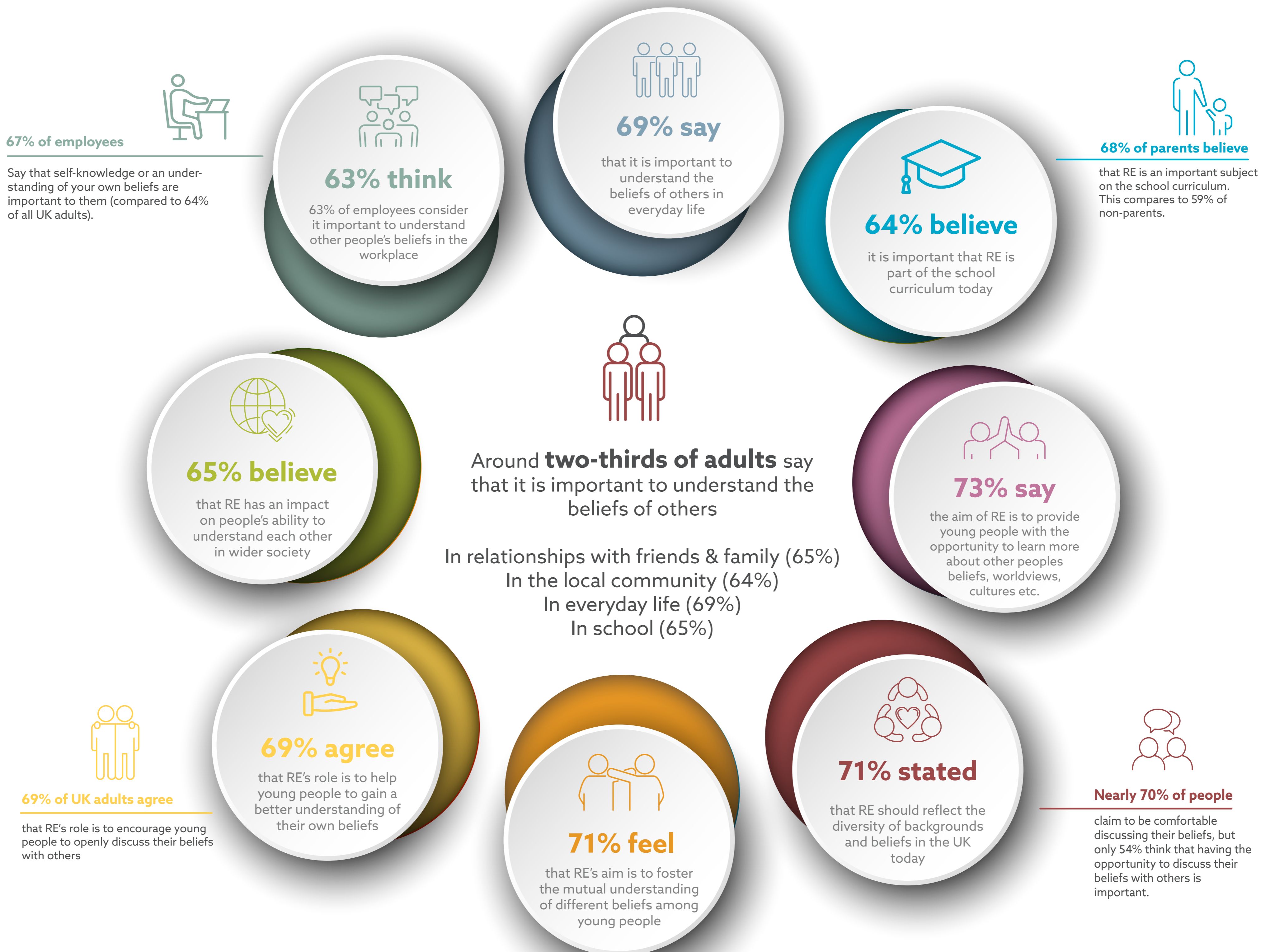
Report Author: Olivia Seymour

Background documents: attachment from CSTG

Religion & Worldviews Survey 2021

Good religious education plays a vital role in equipping young people with the skills and knowledge they need to thrive in today's modern, diverse society and workplace.

In Spring / Summer 2021, Culham St Gabriel's Trust, in collaboration with Savanta, surveyed the British public on their views of the benefits of understanding religious or non-religious worldviews, and the role of RE in schools. The following results are based on 2,000 responses from UK based adults.



Most UK adults think that RE should be taught in schools, with the majority agreeing that it helps young people understand and respect others' beliefs, regarded by many as important in a variety of social and private contexts.

North Yorkshire County Council

North Yorkshire Standing Advisory Council on Religious Education (SACRE)

October 2021 Update from the Local Authority

1.0 Purpose of the Report

To inform Members on work carried out by Local Authority Officers in the support of SACRE.

2.0 Communication and resourcing

- 2.1 Local Authority Officers have met with the Professional RE Adviser in order to co-ordinate training and the work plan.
- 2.2 The Local Authority Officers and Professional RE Adviser are continuing to work with the clerk to update and improve both the public facing and school facing website pages relating to SACRE, Religious Education and Collective Worship. Further work to audit and update resources for schools will begin this term.
- 2.3 The termly newsletter is continuing to be distributed to schools via the Red Bag system, and occasional and ad hoc information is also posted via Red Bag.

3.0 Training

- 3.2 The training programme continues to be offered. The 2022 offer will be finalised this term. Feedback from courses this year will be used to inform content for future courses. It is intended that courses will continue to be delivered remotely via MS Teams.

4.0 Support for Senior Leaders and Governors

- 4.1 The Professional RE Adviser will brief NYCC school advisers on the role of SACRE, the legal framework for RE and the locally agreed syllabus on 5th November 2021.
- 4.2 The School Improvement Service Strategy has been revised with a significantly increased tariff of adviser support across all categories of school.
- 4.3 The School Improvement Service has a new set of priorities for this academic year. The overarching priority is 'Know our schools'. RE is an aspect of 7 of the 8 priorities. LA colleagues will work with the Professional Adviser over the next year to ensure integration and understanding of the role of SACRE for School Improvement and successful Ofsted outcomes.

5.0 Monitoring of RE and the Agreed Syllabus

- 5.1 Local Authority records indicated that 227 community schools and 33 academy schools were given access to the NYCC Agreed Syllabus over the last academic year.
- 5.2 An electronic questionnaire was distributed to schools at the beginning of term. A reminder to request all schools to complete the questionnaire will be sent out this week.

6.0 Ofsted inspections

- 6.1 Since the last SACRE meeting there have been 3 published monitoring visits and 2 published inspections.
- 6.2 There is one reference to RE in an inspection report whose overall effectiveness was inadequate – “There are few opportunities for pupils to develop their spiritual knowledge and understanding. Pupils do not have a good knowledge of different faiths and cultures.”

7.0 New SACRE Annual Report Framework

- 7.1 Attached is information received from NASACRE relating to the new Annual Report Framework.
- 7.2 NASACRE, in conjunction with the Department for Education, will be undertaking a national analysis of Annual Reports using this framework from September 2021.
- 7.3 Officers are working on the Annual Report, ensuring that it reflects the template from NASACRE.
- 7.4 A draft of the Annual Report will be presented to SACRE for approval at its meeting on 7th December 2021.

Adrian Clarke
Principal Education Adviser (Support)
Education and Skills Service
County Hall, Northallerton

October 2021

Report Author: Adrian Clarke

Background documents: None

New SACRE Annual Report framework

Format for the new Annual Report. NASACRE in conjunction with the DfE will be doing a national analysis of Annual Reports using this framework from September 2021.

1. An introduction including:

- Table of contents
- Words from the Chair of SACRE
 - welcoming new members, celebrating successes, thanks, etc.
- Overview, number of times SACRE has met and attendance at meetings, venues, and a brief overview of content of these meetings including Self-evaluation too – link to SACRE Development plan
- Overview as above for the ASC if this is currently sitting, working groups, progress
- *Executive summary (if report is over 10 A4 pages long this might be helpful as a separate document, so readable for schools?)*

2. A section on RE (statutory responsibilities) including:

- The local agreed syllabus and RE in schools, including whether any academies have adopted the LAS
 - Monitoring the AS, relationship with an AS review
 - Work of the ASC and associated working parties if this is currently sitting showing progress, links to other work nationally or locally
- Standards and monitoring of RE
 - This can include monitoring by scrutinising exam data, conversations with schools, teacher groups, website trawls, presentations from teachers. What has SACRE done and how has the monitoring helped SACRE to commend successes and support improvements?
 - Have any schools applied for or achieved REQM awards?
- Teacher training and materials and advice for schools
- Other information (withdrawals and how the SACRE monitors, advises or supports schools with this, complaints)
- Advice to the LA

3. A section on Collective Worship (statutory responsibilities) including:

- Standards and monitoring of CW
 - This can include monitoring by scrutinising Ofsted reports, conversations with schools, teacher groups, website trawls, presentations from teachers. What has SACRE done and how has the monitoring helped SACRE to commend successes and support improvements?
- Determinations
 - How many are current and how many have been applied for and what happened? Link to Determination Process documents online. Is that refreshed, or does it need updating?

- Teacher training provided (locally or national training circulated to schools) materials and advice for schools
 - Other information (withdrawals and how the SACRE monitors, advises or supports schools with this, Complaints)
 - Advice to the LA
4. A section on links with other bodies
- National bodies, e.g. NASACRE, the REC, central faith and belief organisations
 - Local bodies, e.g. Dioceses, Inter Faith Groups, Peace Walks, HMD events
5. A section on other areas of SACRE involvement locally
- Governor training
 - Advice on issues within the community, e.g. Ramadan advice for schools in partnership with the local communities
6. A section on SACRE's own arrangements (**statutory responsibilities**) including:
- Professional and administrative support and how the LA supports the SACRE (clerking, adviser, links to council initiatives)
 - Membership, representation & recruitment - quoracy, issues and successes with recruitment
 - Training for SACRE (and ASC) members
 - Finance given to SACRE for its work
7. Appendices
- Table of GCSE – short and full, A/S & A Level RS results
 - Details on CPD provided to schools
 - Any LA/SACRE policy statements on RE or CW
 - Development plan tied to funding
 - Circulation details for this AR



CHILDREN AND YOUNG PEOPLE'S SERVICES DIRECTORATE

NORTH YORKSHIRE STANDING ADVISORY COUNCIL ON RELIGIOUS EDUCATION

20TH OCTOBER 2021

ROLLING WORK PROGRAMME

INTRODUCTION/BACKGROUND

1. A number of matters considered by SACRE are Standing Items – such as the updates provided by the Local Authority and the Professional Religious Education Adviser. Other Items are periodic – for example, the review of the Constitution – or one-off in nature.
2. It is suggested that SACRE may find it useful to have a Work Programme, detailing when Items are scheduled for consideration.
3. A draft Work Programme is enclosed for your consideration (Appendix A). The intention is that it be included on the Agenda for each meeting so that Members can see what is scheduled and, also, to have the opportunity to suggest Items for inclusion.

RECOMMENDATION

4. SACRE is asked to agree to the Work Programme being included as an Agenda Item at each meeting and to make any comments it wishes to on the enclosed draft.

Patrick Duffy
Clerk to North Yorkshire SACRE

October 2021

Background papers relied upon in the preparation of this report - None

NORTH YORKSHIRE SACRE – ROLLING WORK PROGRAMME (DRAFT)

SACRE 7 DECEMBER 2021			
ITEM	LEAD	REPORT DEADLINE	COMMENTS
Annual Report	Principal Education Officer (Support)	26 November 2021	Final draft to be approved
Professional RE Adviser's update	Professional Religious Education Adviser		Standing Item
Local Authority Update	Principal Education Officer (Support)		Standing Item
Ofsted Inspections	Principal Education Officer (Support)		Standing Item
Development Plan 2020-2022 – Progress Update	Chair		As well as the update on the current Development Plan, at least one nomination will be sought from each Group to form a Working Group to draft the Development Plan for 2022-2024
Member Training (formal)	Professional Religious Education Adviser	Not applicable	Will be held immediately prior to the start of the formal meeting

NORTH YORKSHIRE SACRE – ROLLING WORK PROGRAMME (DRAFT)

SACRE 1 FEBRUARY 2022			
ITEM	LEAD	REPORT DEADLINE	COMMENTS
Professional RE Adviser's update	Professional Religious Education Adviser	21 January 2022	Standing Item
Local Authority Update	Principal Education Officer (Support)		Standing Item
Ofsted Inspections	Principal Education Officer (Support)		Standing Item

NORTH YORKSHIRE SACRE – ROLLING WORK PROGRAMME (DRAFT)

SACRE 21 JUNE 2022			
ITEM	LEAD	REPORT DEADLINE	COMMENTS
Review of Constitution	Clerk	10 June 2022	Revised Constitution was approved in June 2021. Seems appropriate to review after one year
Professional RE Adviser's update	Professional Religious Education Adviser		Standing Item
Local Authority Update	Principal Education Officer (Support)		Standing Item
Ofsted Inspections	Principal Education Officer (Support)		Standing Item
Development Plan 2022-24	Chair		Draft to be presented by Working Group
Member Training	Professional Religious Education Adviser	Not applicable	Will be held immediately prior to the start of the formal meeting

NORTH YORKSHIRE SACRE – ROLLING WORK PROGRAMME (DRAFT)

SACRE SEPTEMBER 2022 (DATE TO BE SET)			
ITEM	LEAD	REPORT DEADLINE	COMMENTS
Election of Chair and Election of Vice-Chair	Clerk	N/A	Clerk to seek nominations one month before the meeting
Annual Report 2021/2022	Principal Education Officer (Support)	7 working days prior to the meeting	Consideration of draft
Professional RE Adviser's update	Professional Religious Education Adviser		Standing Item
Local Authority Update	Principal Education Officer (Support)		Standing Item
Ofsted Inspections	Principal Education Officer (Support)		Standing Item

This page is intentionally left blank